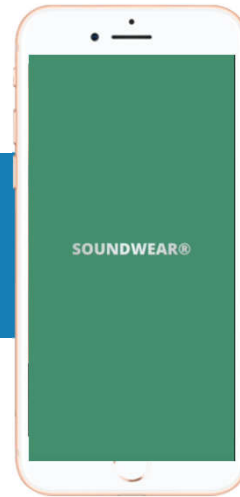


APP  
USER GUIDE



SOUNDWEAR®

The SOUNDWEAR App's primary feature is to customize the user's preferred profile settings that will provide a fit and comfortable hearing experience.



NOTE: Due to improvements made to the app over time, your app may look and act differently from what is shown in this manual. If this is the case please follow instructions provided by the app.

### **Before You Begin**

Make sure that

- Bluetooth on your smartphone is turned on.
- Your hearing aids have enough power.
- Your hearing aids are within 5 feet of your smartphone.
- Only Available on iOS 9 or later, iPhone 5 or above; Android 6 or later, screen size 4" or above.

## Download the App

### **WAY 1:**

Visit and search in App store or Google Play.



### **WAY 2:**

Open up the camera on your smart phone.

Scan the following QR code to  
download the App.



NOTE: For iOS 9 or later, iPhone 5 or above; Android  
6.0 or later.

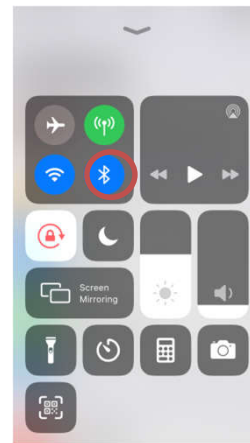
## Connect the App

### Step 1: Enable the Bluetooth

Make sure that Bluetooth is enabled on your smart phone before open the App.

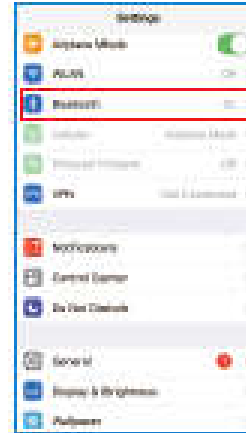
### **WAY 1**

Swipe upwards from the bottom of the screen to reveal the Control Center and tap the Bluetooth icon.(For iOS)



## WAY 2

Check the “Bluetooth” menu option under “Settings”.

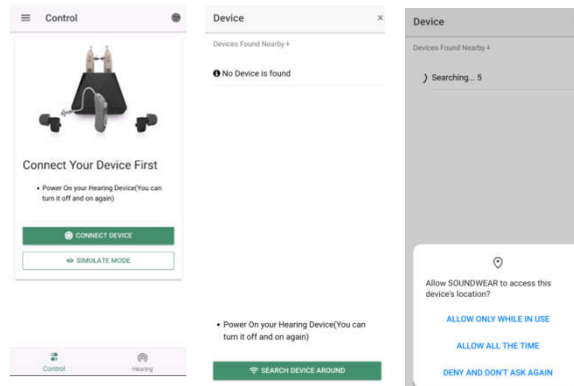




## Connect the App

### Search

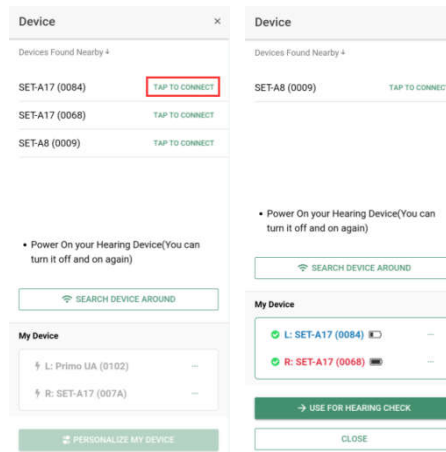
Search device by following the steps.



## Connect the App

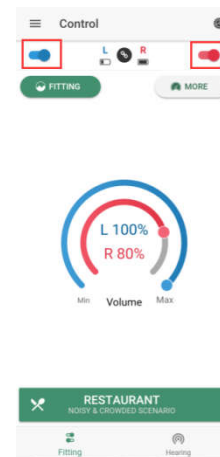
### Connect

Connect devices on by one for your appropriate ears.



## ON & OFF Setting

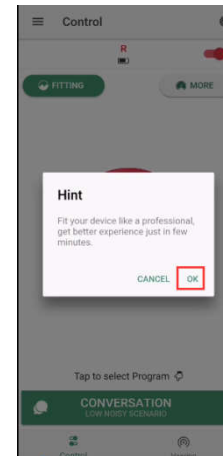
Select corresponding device to do ON/OFF by sliding to left or right.



## Auto-fitting

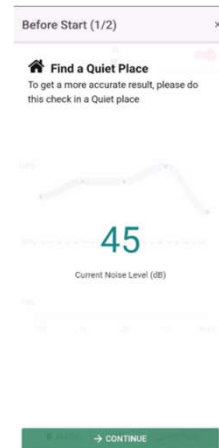
Choose OK if you want auto-fitting with your hearing aid through the APP.

Tips: You can choose CANCEL to experience the original setting first and do the hearing check later.



## Auto-fitting

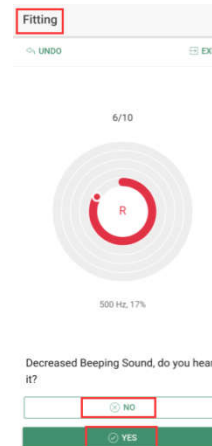
Find a quiet place do the Fitting or Hearing check.



## Auto-fitting

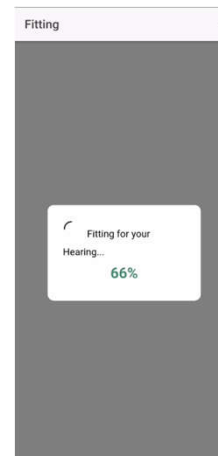
Follow the App guiding steps and confirm active reference tone at each frequency testing.

Confirm “Yes” or “No” in all testing frequency.



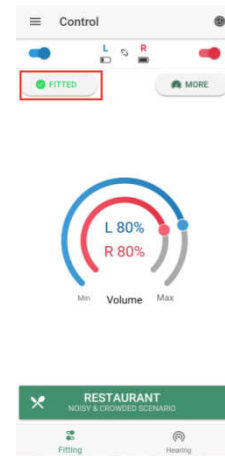
## Auto-fitting

Once the hearing check is complete, the APP will start fitting your hearing aid.



## Auto-fitting

Once fitted, it will show “Fitted” on the left button.

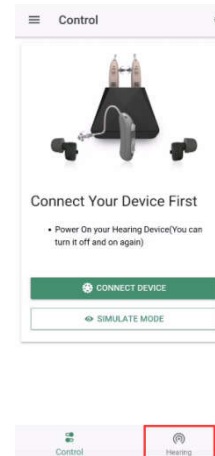




## Hearing check

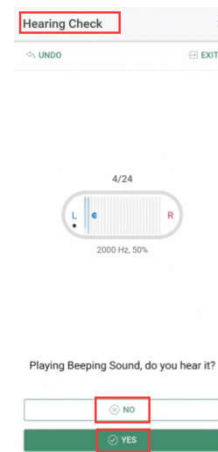
If you choose hearing check separately.  
Follow the steps.

Start by TAPPING on the HEARING.  
And then the hearing check process will be the same with auto-fitting.



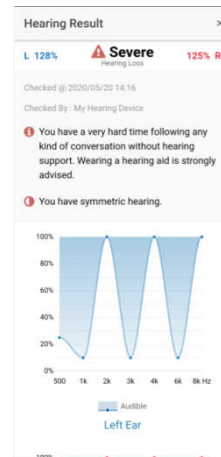
## Hearing check

Follow the app guiding,  
Pay attention to  
finished the hearing  
check from left ear to  
right ear.



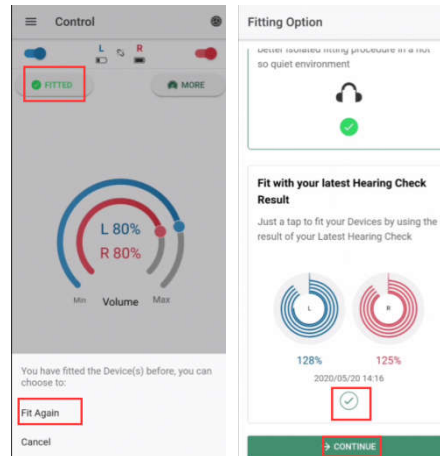
## Hearing check

Once finished, the App will show you the hearing result.



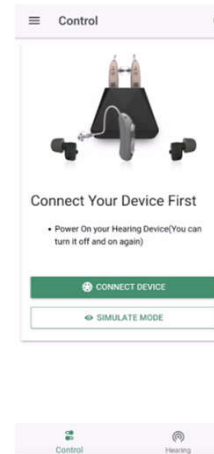
## Hearing check

You can use your hearing result to re-fitting your device follow the steps.



## Sound control

Adjust your sound settings by tapping the “Control” button on the bottom left of your home page screen. From here you can adjust Mode/Programs, Volume and Band.



## Control

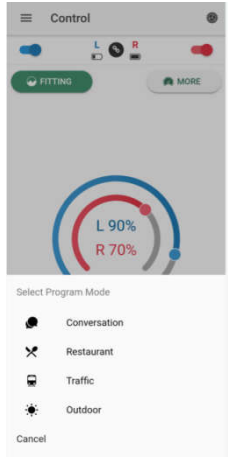
### Mode

#### **Choose the listening mode**

according to your needs on App by tapping on the program. App preset function to change both left and right instruments together.

Tips: Memory switch on devices allows you to change mode individually.

# Control



## Control

### Volume

**Control the volume** of your hearing aids by dragging around the circle.

Both instruments can be adjusted together at the same level by select link icon, or independently by unlink.





## Control

### Adjustment

**Adjust your bands** by tapping the band button and dragging the sliders on the appropriate frequency.

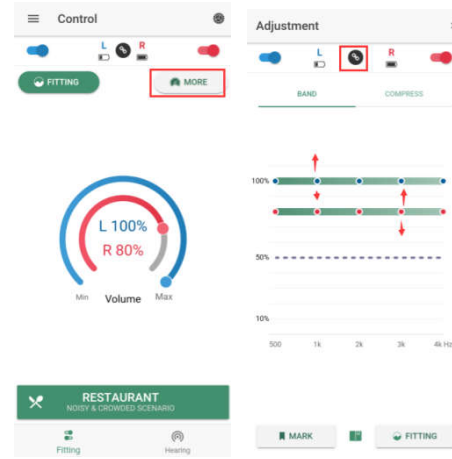
BAND function can customize the amplification of sound at a variety of frequencies.

COMPRESS function can shift sound from one pitch to another to make speech sounds more audible.

## Control

### Adjustment

For specific models, there would be COMPRESS function available.



## Troubleshooting

Technical issues with Smart device	Restart the Smart device
App and Smart device incompatibility	Check iOS/Android OS version
App outdated	Update App with newer version
Improper battery insertion	Re-insert or replace with new battery
cause/reason of failure unknown/undetermined	Contact instrument provider, where instrument was purchased.

